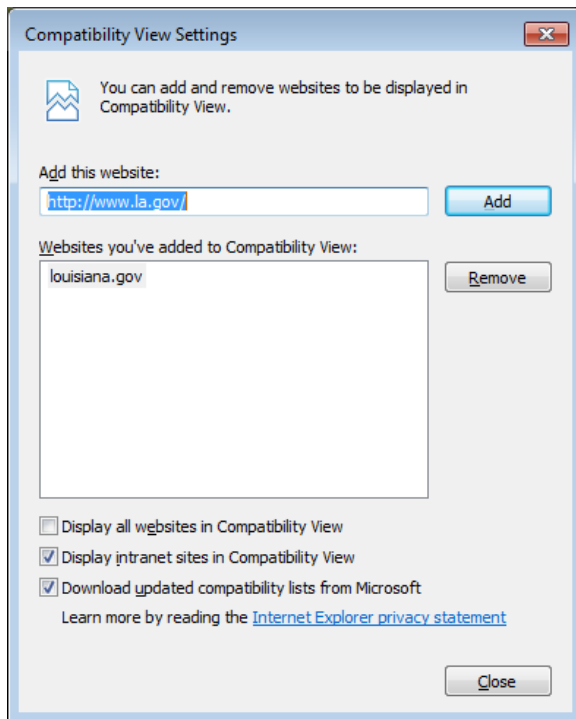
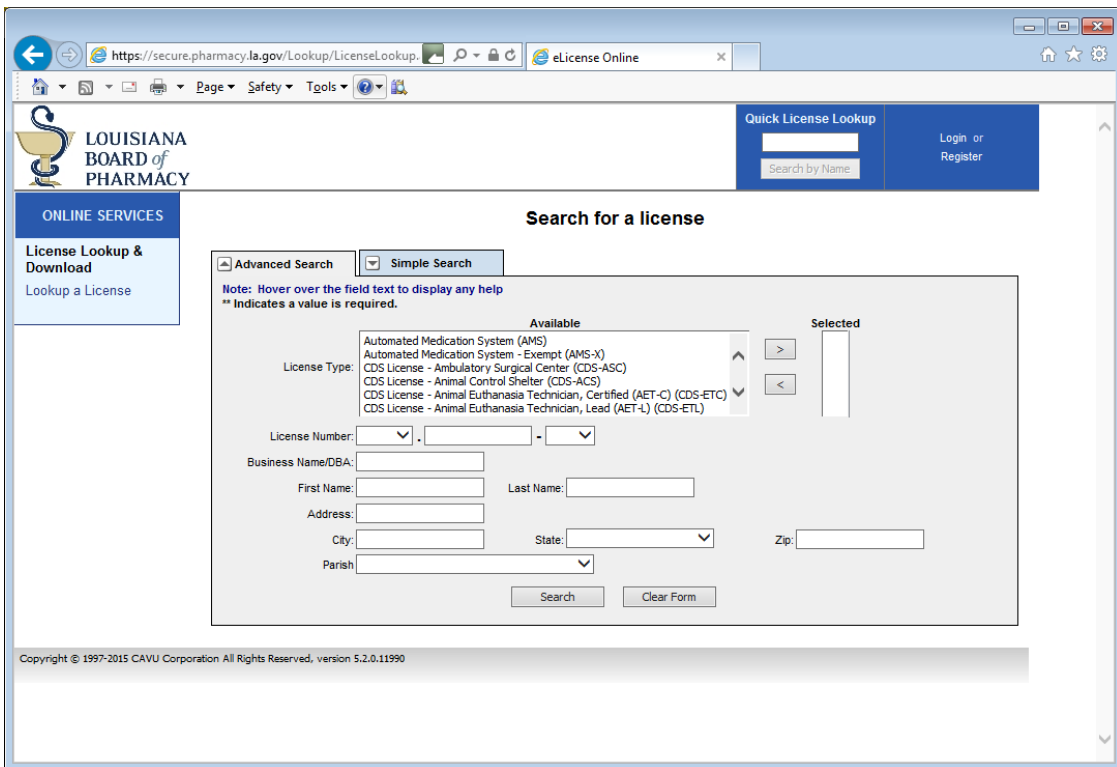


In Internet Explorer, select **Tools**, then **Compatibility View settings**



- In the “Add this website:” box, enter **www.la.gov** and then select the “Add” button
- Close the pop-up window
- Login and start or restart your online renewal

**If the problem still exists, install one of the following web browsers:**

- Google Chrome (https://www.google.com/chrome)
- Mozilla Firefox (https://www.mozilla.org/en-US/firefox/new)